

ApneaLink Air Basic set,
plus its Oximetry set and EasySense Respiratory Effort sensor.



Ordering information and product codes

ApneaLink Air Basic Set	ApneaLink Air recorder device Software Installation CD USB download cable 1 reusable belt 3 nasal cannulas Carry Bag 2 AAA batteries	22364
EasySense Respiratory Effort Sensor		22321
Oximetry Set	1 XPOD LP Oximeter 1 XPOD LP Oximeter Clip 3 NONIN 7000A single use oximetry sensor	22380*

Accessories & consumables

Oximeter components	XPOD LP Oximeter	22374*
	XPOD LP Oximeter Clip	22371*
	NONIN 7000A single use oximetry sensors – pk 24	22338
	NONIN Oximeter Reusable Soft Sensor (8000SS) - Small	1431003
	NONIN Oximeter Reusable Soft Sensor (8000SM) - Medium	1431004
	NONIN Oximeter Reusable Soft Sensor (8000SL) - Large	1431005
	NONIN Oximeter Reusable Finger Clip Sensor - 8000AA (1m)	631803
Nasal Cannulas	Nasal Cannulas – pk 25	70388
Other accessories	ApneaLink Air reusable Belt	629052
	ApneaLink Air Carry Bag	22373
	ApneaLink Air Software CD 10.1	22372
	USB Cable	22375

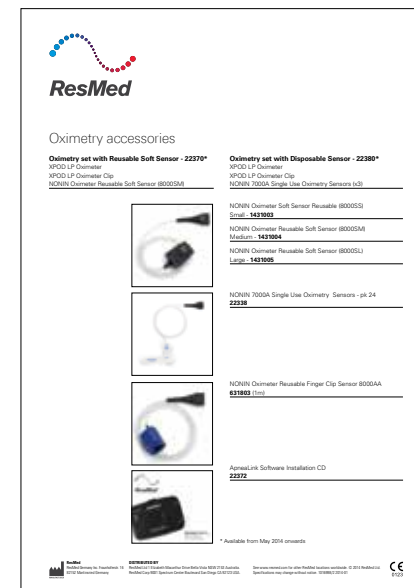
* Available from May 2014 onwards



Technical Specifications

Recorder	Enhanced Hardware EasySense respiratory effort sensor Supports oximetry Light indicators - Test complete indicator - Respiratory flow indicator - Effort Sensor connection indicator - Oximetry connection indicator
Signal Recording	Respiratory effort Respiratory flow Snore Blood oxygen saturation Pulse Battery voltage
Download application	PC download
Internal battery	2 AAA alkaline batteries
Internal memory	Recording period: 48 hours Internal clock
Dimensions	Recorder: 60 x 86 x 28 mm (2.4" x 3.4" x 1.4") Pulse oximeter: 53 x 20 x 15 mm (2.1" x 0.8" x 0.6") Recorder weight: 66 g (2.3 oz)

For more information: **Accessories Guide**



Please contact your ResMed representatives for more information.



ApneaLink™ Air
Home sleep testing device



Home sleep testing made easy

ResMed's new ApneaLink Air provides healthcare professionals with a portable easy-to-use home sleep testing device for patients with sleep disordered breathing.

ApneaLink Air is a cost-effective and convenient solution to test patients for sleep apnea in the comfort of their own bedroom. Testing patients in their own environment helps improve their experience and acceptance of the world of sleep apnea therapy right from the start.





ApneaLink Air, a solution to help you improve your patient's care

With a new stylish design, ApneaLink Air provides the performance and reliability of our trusted ApneaLink products in a more compact, lightweight, easy to use device. As a low-cost, portable sleep test device, the new ApneaLink Air is capable of recording up to five channels of information: respiratory effort, pulse, oxygen saturation, nasal flow and snoring.

Thanks to its new hardware, ApneaLink Air is now providing improved ease of use to both patients and healthcare professionals, while continuing to deliver the high quality results you expect from ResMed. Using this intuitive, cost-effective and reliable device will not only help you grow your business, but also provide improved patient care by easy access to treatment.

ApneaLink Air benefits

It has never been easier for patients to set up and use ApneaLink Air at home. With new light indicators and immediate feedback on device set up and recording status, you can make overnight sleep testing a success.

Innovative design

Enhanced aesthetics with a new stylish compact design.

Improved usability & security for both patients and healthcare professionals with:

- One touch operation with a new intuitive Start/Stop button
- Longer recording time and storage capability, up to 48 hours
- Test complete light providing feedback on recording time to users
- Good signal indicators to help successful set-ups.

Advanced analysis features

Reliable automatic analysis

- Including apnea-hypopnea index (AHI), hypopnea index (HI), flow limitation, snoring and oxygen desaturation index (ODI)
- Manual scoring possibility for more detailed patient data
- Configurable analysis parameters allowing adjustment of thresholds

Validated results meeting AASM and CMS definitions for hypopnea scoring guidelines.

Cheyne-Stokes probability detection helping determine when to refer patients for further in-lab diagnosis.

Differentiation between obstructive and central apneas.

Information at a glance

Printable patient instructions when programming the device.

Flexible report options

- **Email summary and signal reports** to send to referral physicians or other relevant parties
- **Extended report** containing additional overview of respiratory data
- **Prescription page** streamlining process for healthcare professionals



Access to detailed signals overnight

More details are available through ApneaLink Air software for clinicians who wish to have access to a more in-depth view of their patients' recordings.

Full night view

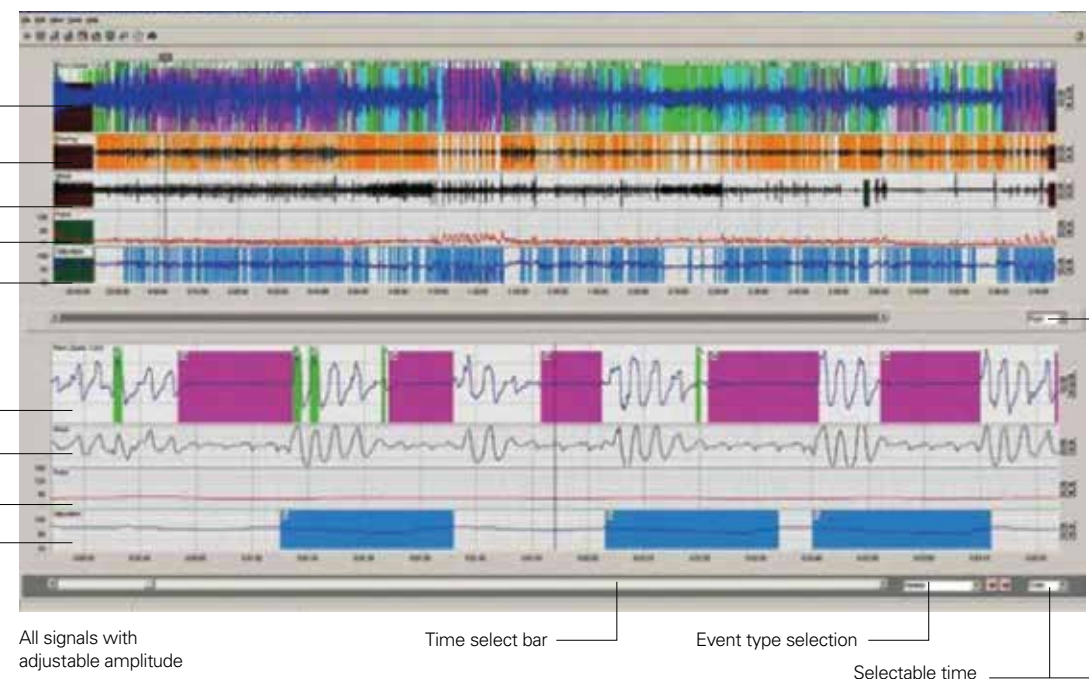
Signals (Selectable):

- Nasal flow
- Snore
- Respiratory effort
- Pulse
- Oxygen saturation

Expanded view

Signals (Selectable):

- Nasal flow
- Respiratory effort
- Pulse
- Oxygen saturation



Comprehensive reporting

ApneaLink Air automatically analyzes and derives AHI, flow limitation and snoring and later automatically generates a simple, easy-to-interpret report with a color-keyed AHI or Risk Indicator for the clinician to review.

